

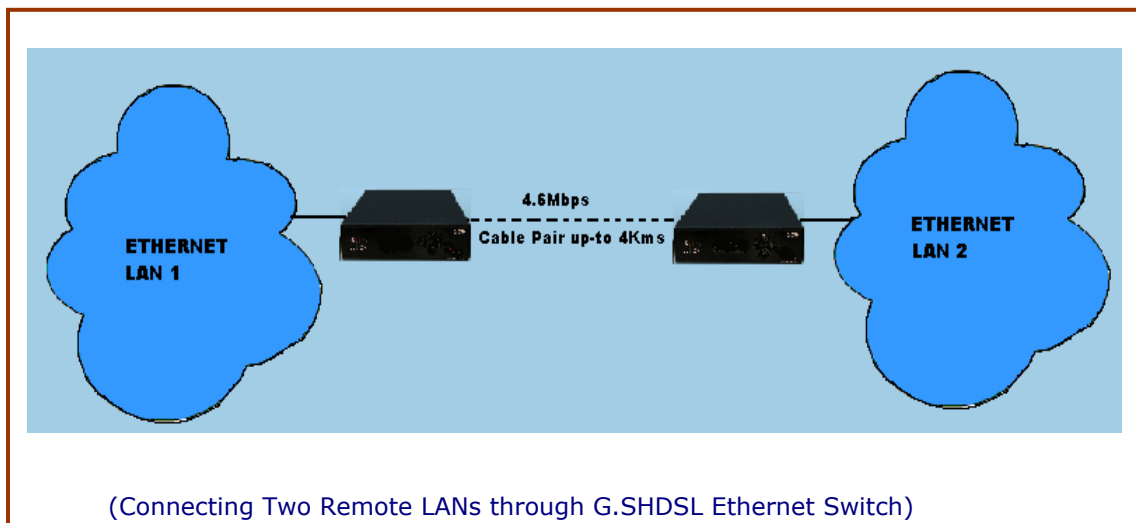
The Real-Connect is a powerful, high performance G.SHDSL Modem that integrates isolated LANs in a campus like environment, using commonly available telephone cables. Real-connect delivers configurable line rates up to 4.6 MB (symmetrical) — over a distance of 5 Km. Its incremental transmissions speed (256K to 4.6MB) allows service providers to adjust for traffic.

A complex ASIC powered system uses G.991.2 G.SHDSL technology to provide 4.6 Mbps full duplex data rate.

The Real-Connect establishes link by the installation of two Real-Connects one at either end. Connect Ethernet segments at either end to RJ-45 connector & twisted pair cable to RJ-11 connector. Real-Connect automatically learns the MAC addresses on either side & filters the traffic thereby enhancing security & bandwidth.

Features and Benefits

- ❑ Up-to 4.6 Mbps full duplex connectivity.
- ❑ Bridges two Ethernet LANs 8-10 km apart using single dedicated twisted pair.
- ❑ Simple Configuration using DIP switches.
- ❑ Plug & play.
- ❑ Operating system & network software independent.
- ❑ Fully compatible with Ethernet & IEEE 802.3 standards.
- ❑ MAC address filtering enhances security & bandwidth.






REAL-CONNECT G.SHDSL Ethernet Driver

Realtime : Realtime . Realtime Systems

Specifications

Interfaces	<ul style="list-style-type: none"> ➤ Twisted pair – RJ-11 ➤ Ethernet segment- RJ-45 10 Base T
DSL Interface	<ul style="list-style-type: none"> ➤ G.991.2 Compliance ➤ Modulation: Trellis coded pulse Amplitude modulation (TC-PAM)
Protection	<ul style="list-style-type: none"> ➤ Built in protection on the RJ-11 port with fuses & gas discharge tubes.
Ethernet port	<ul style="list-style-type: none"> ➤ One 10BASE-T (RJ-45), IEEE 802.3, half & full duplex
Bridging	<ul style="list-style-type: none"> ➤ Dynamically learning and aging up-to 2048 MAC addresses
Power Supply	<ul style="list-style-type: none"> ➤ 90-260ACV, 50/60 Hz
Operating Temperature	<ul style="list-style-type: none"> ➤ 0- 60 °C
Dimensions	<ul style="list-style-type: none"> ➤ 89(W) * 122(D) * 30(H)

* The specifications above may be changed without any prior notice.

<p>USA Headquarters Distinctive Devices Inc Suit # 100, One Bridge Plaza , Fort Lee , New Jersey – 07024 Tel : 201-363-9922 Fax : 201-363-9926 http://www.ddev.net</p>	<p>Manufacturing Realtime System Ltd. A-235,Okhla Industrial Area, Phase -1, New Delhi – 110 020 Tel : 011- 2681 2556/57 , Fax: 011-26812555 Email : realtime@vsnl.com http://www.rtsindia.com</p>	 <p>FM 59103 ISO 9001 Certified</p>
---	---	---